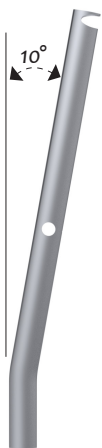
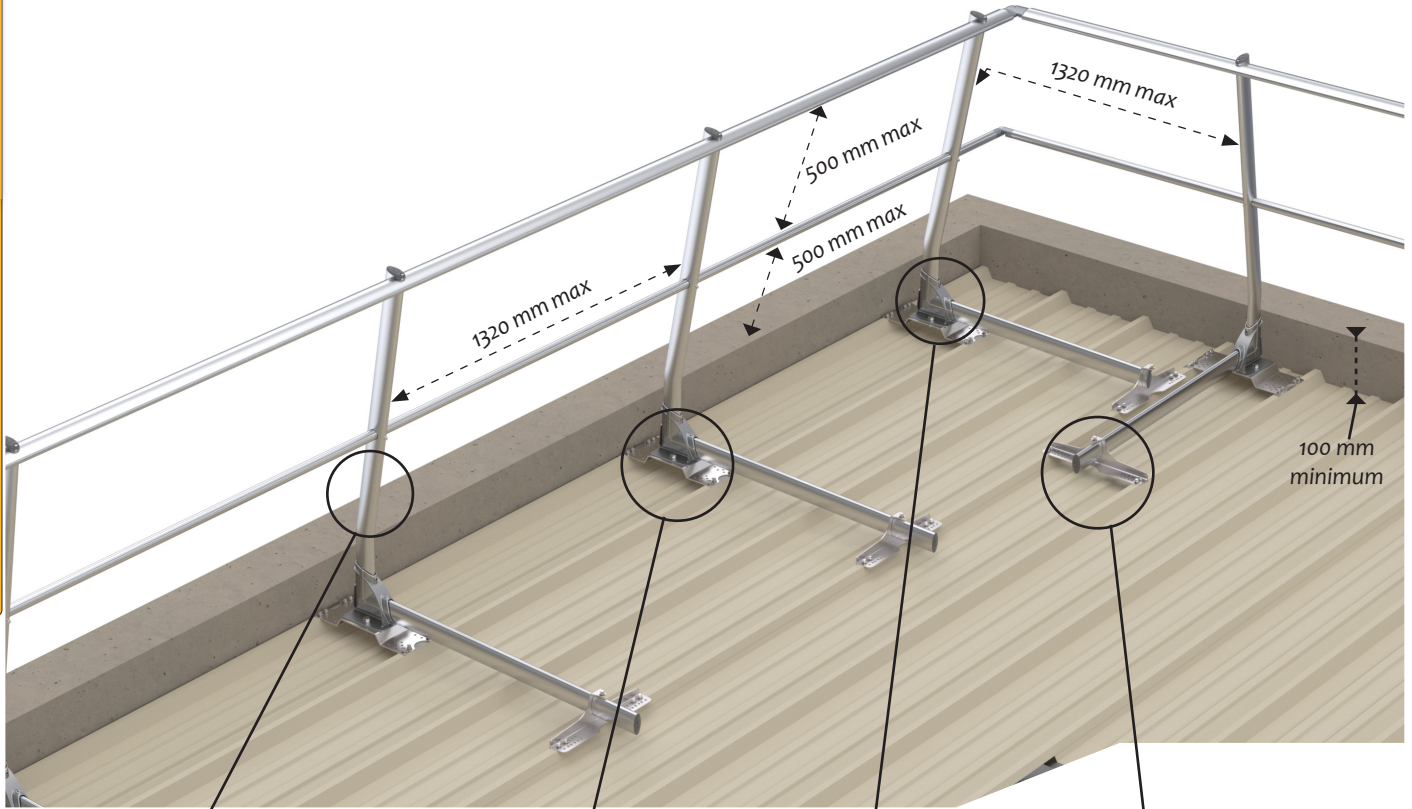
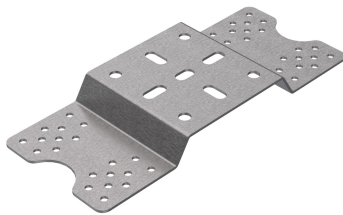


Inclined guardrail with midrail: GCE-BAI

The 10-degree inclined version is chosen for aesthetic reasons as it is less visible from the ground. It also makes it possible to adjust the slope of the roof.

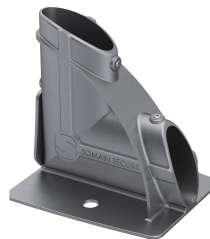


REF: 102231
10-degree inclined upright.

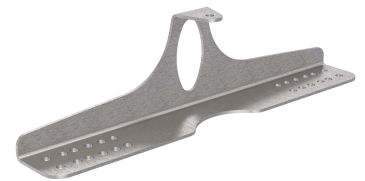


REF: 100270
Stainless steel support for corrugations in steel deck bases 210 to 330 mm.

REF: 101550
Zinc-plated support for corrugations in steel decks 210 to 330 mm.



REF: 100142
Guardrail base without footing. Pre-mounted clamping screws.



REF: 100271
Stainless steel support strut for corrugations in steel decks 210 to 330 mm.

REF: 101551
Zinc-plated strut support for corrugations in steel decks 210 to 330 mm.